



Fire Sprinkler Monitoring Product Catalog





Contents

Flow Switches	4
Pressure Switches.....	8
Supervisory Switches.....	10
Corrosion Testing.....	14
Dry System Corrosion Solutions	15
Wet System Corrosion Solutions	16
Corrosion Monitoring.....	17
Explosion Proof Devices.....	18
Releasing Panels	20
Notification Appliances	22
Digital Communicators	25
Conventional Detectors	26
Pull Stations.....	27
Product List.....	28
Notes	31
Residential Waterflow Switch Applications Drawing.....	32
Dry Pipe Sprinkler System Drawing.....	33
Wet Pipe Sprinkler System Drawing.....	34
Deluge System Drawing.....	35

Potter Electric Signal Company, LLC

Established in 1898, Potter Electric Signal Company has earned a reputation worldwide as an elite provider of goods and services. Potter produces a wide array of products including fire sprinkler monitoring systems, electronic fire systems, and vault and safe security systems. With more than 120 years of sprinkler monitoring experience, Potter is also the trusted source for corrosion testing, monitoring, and treatment with our comprehensive suite of corrosion solutions.

At Potter, not only do we supply our customers with products that provide real world solutions for their unique needs, we strive to provide them unequalled service and technical support.

At Potter you will always receive prompt dependable service from our dedicated team of professionals.

Every employee at Potter is committed to providing you, the customer, the peace of mind in knowing that when you purchase our products, you are providing your customers the very best product available for the protection of life and property.

Potter is THE Symbol of Protection.



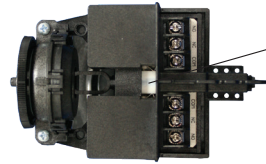
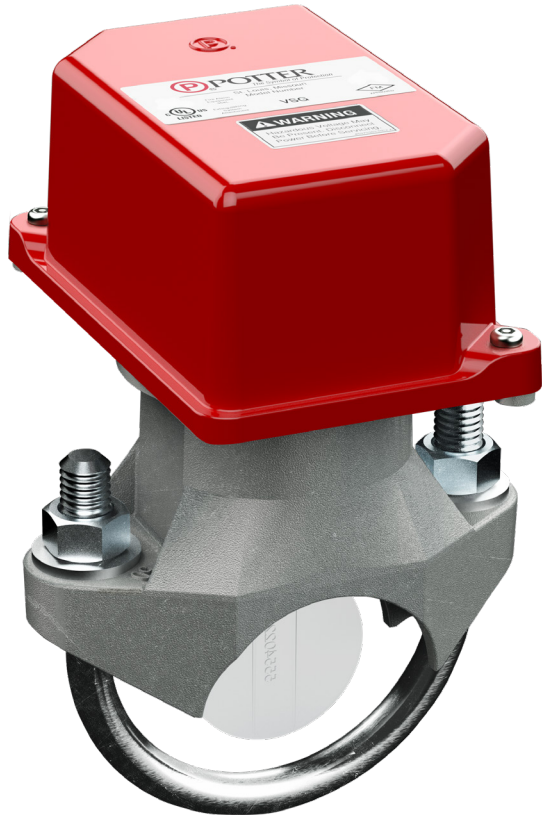
Potter Electric Signal Company, LLC
1609 Park 370 Place
St. Louis, MO 63042

866.572.3005
Tech Support: 866.956.0988
www.pottersignal.com

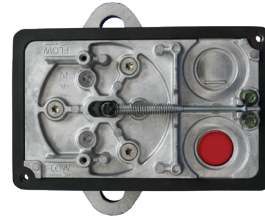
Canada: 888.882.1833
Asia/Pacific: 65.9682.8998



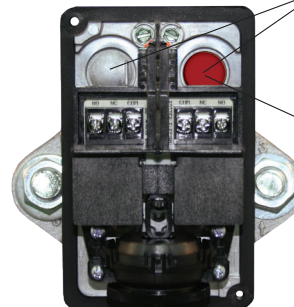
Flow Switches



Visual
switch
activation



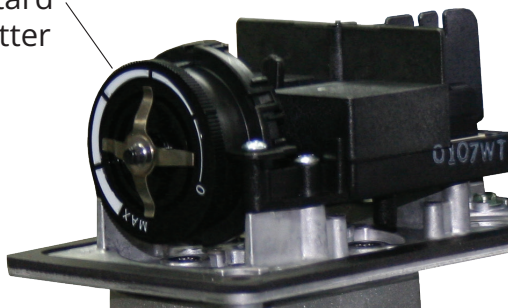
Field
replaceable
switch/retard
assembly



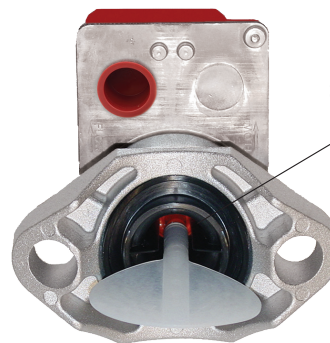
Two knockouts for
access to separate low
and high voltage wiring
chambers

One knockout
factory removed
and covered with
easily removable
plug for faster
installation.

Updated easy
to read retard
dial for better
accuracy

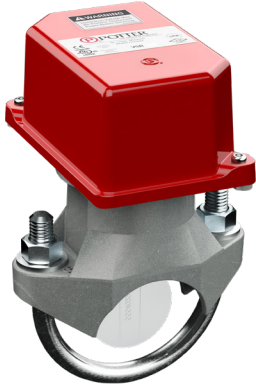


Non-Corrosive Saddle
Bushing eliminates
water to metal contact
stopping the possibility
of corrosion





Flow Switches

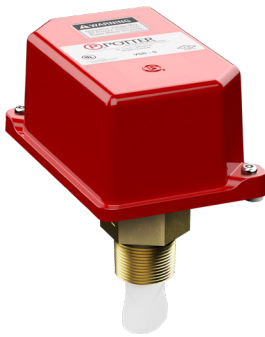


VSR

Waterflow Alarm Switch

- Also available in NEMA 4X corrosion resistant models as VSR-CR
- NEMA 4 enclosure
- Factory installed neoprene gasket
- 0-90 second field replaceable pneumatic retard
- 450 psi system pressure rated
- Schedule 5-40 pipe
- Synchronized switch action
- 5-year warranty
- Listings: UL, cUL, FM, LPCB, CSFM, and CE

VSR-EU: 30 second retard and is VdS, EN 12259-5 and LPCB approved



VSR-S

Waterflow Alarm Switch Small Pipe

- NEMA 4 enclosure
- Factory installed neoprene gasket
- 0-90 second field replaceable pneumatic retard
- 300 psi system pressure rated
- Two 1/2" KOs for dual voltage applications
- 1" NPT threaded brass bushing fits pipe sizes 1"-2"
- Ideal for both commercial and residential applications.
- 5-year warranty
- Listings: UL, cUL, and CSFM

VSR-S EU is EN 12259-5 and LPCB approved and has a 1" BSPT threaded bushing

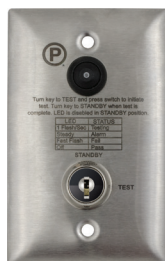


VSR-AT

Waterflow Alarm Switch with Auto Test Feature

- Performs functional test without discharging water
- Conserves water
- Eliminates environmental concerns from sprinkler system discharge
- Reduces corrosion
- Test is initiated by ATC Key switch or any addressable fire panel
- Operates on 24 vdc power from fire panel
- Listings: UL, cUL, FM

VSR-EU: 30 second retard and is EN 12259-5 and LPCB approved



Auto Test Control Plate

- Initiates Auto Test feature in VSR-AT
- Momentary push button test switch
- Key switch to enable/disable the push button
- LED indicator



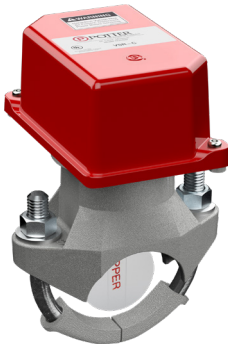
Flow Switches



VSR-SG/ST

Waterflow Alarm Switch With Union

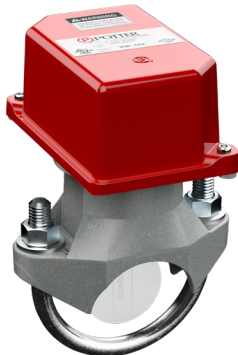
- NEMA 4 enclosure
- Factory installed neoprene gasket
- 0-90 second field replaceable pneumatic retard
- 175 psi system pressure rated
- 1" male CPVC fitting or 1" NPT bushing
- Fits CPVC pipe sizes 1", 1 1/4", 1 1/2", and 2"
- Special fitting allows for installation in confined spaces
- 5-year warranty
- Listings: UL, cUL, CSFM, and CE



VSR-C

Waterflow Alarm Switch For Copper Pipe

- NEMA 4 enclosure
- Factory installed neoprene gasket
- 0-90 second pneumatic retard
- 175 psi system pressure rated
- Non-corrosive saddle bushing
- Two 1/2" KOs for dual voltage applications
- Pipe Sizes: 2", 2 1/2", 3", 4" for type K, L, and M copper pipe
- 5-year warranty
- Listings: UL, CSFM



VSR-FE-2

Waterflow Alarm Switch With Electronic Retard

- NEMA 4 enclosure
- Factory installed neoprene gasket
- 0-90 second electronic retard
- 450 psi system pressure rated
- Non-corrosive saddle bushing
- Two 1/2" KOs for dual voltage applications
- Pipe schedules 10-40 Sizes 2"-8"
- 5-year warranty
- Listings: UL, ULC and FM



FSBS

Flowswitch Bypass Switch

- Suitable for use in NFPA 13, 2016, A.6.8.4 applications
- Allows sprinkler system to be filled without activating local waterflow alarm or fire panel
- Eliminates need to coordinate schedules with alarm companies and sprinkler tech's
- Provides visual indication of the FSBS selected mode: Normal or Bypass
- Indicates status of the monitored Flowswitch
- Key operated to prevent unauthorized use
- Compatible with any flowswitch, local indicating appliance and fire panel



Flow Switches

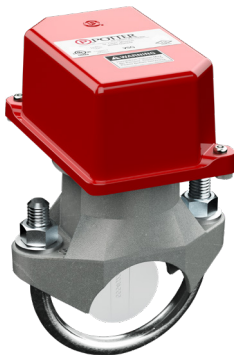


VS-SP

Special Application Waterflow Switch Without Retard

- NEMA 4 enclosure
- Factory installed neoprene gasket
- 250 psi system pressure rated
- One SPDT (Form C) contact second set of contacts optional
- 1" solid brass threaded bushing
- 12 paddles provided for use on plastic, copper, and schedule 40
- 5-year warranty
- Listings: UL, cUL, CSFM, and CE*

*CE model has 1" BSPT threaded bushing



VSG

Waterflow Alarm Switch For Low Flow

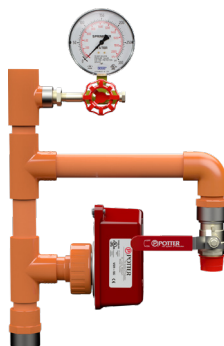
- NEMA 4 enclosure
- Factory installed neoprene gasket
- 0-90 second electronic retard
- 450 psi system pressure rated
- Non-corrosive saddle bushing
- Two 1/2" KOs for dual voltage applications
- Pipe Sizes 2", 2 1/2", 3", 4"
- Operates at 4 GPM, specially designed for water mist systems
- 5-year warranty
- Listings: UL and CSFM



WFSR-F

Pressure Activated Waterflow Alarm Switch With Retard

- NEMA 4 enclosure
- For wet systems utilizing alarm check valves
- Factory installed neoprene gasket
- 0-90 second pneumatic retard
- 175 psi system pressure rated
- 1/2" male NPT fitting
- Eliminates the need for retard chambers
- Two 1/2" KOs for dual voltage applications
- 5-year warranty
- Listings: UL, cUL, CSFM, FM, VdS, and CE



RD13 Series

Residential Riser

- Service pressure up to 175 psi
- Drain and test valve
- Pressure gauge
- Service usage, NFPA 13D & 13R
- Sizes: 1", 1 1/4", 1 1/2", 2"
- 5-year warranty on VSR-SG
- Available with or without VSR-SG Flowswitch. Model without flowswitch includes a removable cap for installing the flowswitch at a later date.



Pressure Switches



PS Series

Pressure Type Waterflow Alarm/Supervisory Switch

- Weather/UV/Flame resistant high impact composite cover
- Factory installed neoprene gasket
- Pressure range: 4-15 psi (PS10), 5-30 psi (PS15), 10-60 psi (PS25 & PS40), 25-175 psi (PS120)
- 300 psi system pressure rated
- ½" male NPT fitting
- Two ½" knockouts for dual voltage applications
- Isolated wiring chambers eliminate NEC questions regarding multi-voltage applications
- Factory set for operation at:
 - PS10 Pressure Increase at 6 psi
 - PS15-2 Pressure decrease at 10 psi, Pressure increase at 20 psi
 - PS25-2 Pressure decrease at 18 psi, Pressure increase at 28 psi
 - PS40-1 Pressure Decrease at 30 psi
 - PS40-2 Pressure Increase at 50 psi, Pressure Decrease at 30 psi
 - PS120-1 Pressure Decrease at 110 psi
 - PS120-2 Pressure Increase at 130 psi, Pressure Decrease at 110 psi
- 5-year warranty
- Listings: UL, cUL, CSFM, FM, LPCB, and CE

'VdS' is listed with UL, FM, VdS, CUL, LPCB, and CSFM



Two 1/2" knockouts for dual high/low voltage functions or in/out wiring

Complies with NEC 760.55



Single captive tamper-proof screw for quick access and easy installation

Compact design for easy installation in tight spaces and rain-lip for protection against the elements



Separate wiring chambers creating the only NEC 760.55 code compliant pressure switch in the industry



Pressure Switches



PS15

Pressure Supervisory Switch for Low Pressure Systems

- Weather/UV/Flame resistant high impact composite cover
- Factory installed neoprene gasket
- 300 psi system pressure rated
- Pressure range 5-30 psi
- ½" male NPT fitting
- Two ½" knockouts for dual voltage applications
- Isolated wiring chambers eliminate NEC questions regarding multi-voltage applications
- Factory set for operation at 20 psi on pressure increase and 10 psi on pressure decrease
- 5-year warranty
- Listings: UL, ULC, CSFM, FM, LPCB, and CE
- Typically used on low pressure systems



BVL

Lever Type Bleeder Valve

- For use as a test valve for supervisory pressure switches on dry pipe and preaction sprinkler systems
- Should be installed in-line with pressure switch and gauge
- Convenient means for removal or testing the pressure actuated device without affecting the pressure in the system
- ½" NPT connections
- Recommended for Nitrogen Systems to conserve Nitrogen and reduce wear on generators



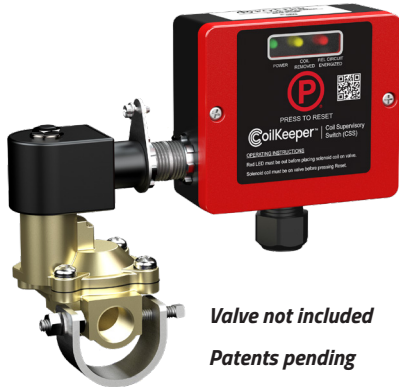
PCS/ADPS

Pump Control/Adjustable Deadband Pressure Switch

- Independent set and reset points
- Adjustable operating range 25-300 PSIG
- 12 PSI minimum deadband
- NEMA 4X enclosure for indoor or outdoor use
- Horsepower rating:
 - PCS: 1/2HP
 - ADPS: 1/8 HP
- Listings: UL, CE, and CSA



Supervisory Switches



*Valve not included
Patents pending*

CoilKeeper™ Supervisory Switch

- Solenoid monitoring on preaction/deluge systems
- Ability to show coil state through simple LEDs
- Detects open or shorted coils
- Can be mounted at the solenoid or remotely
- Provides visual indication of coil and the releasing circuit status
- Listings: UL, cUL, and CE marked

*Not intended for use on addressable release modules

Actuator Properly Installed



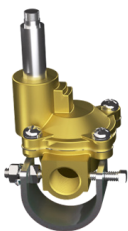
When the actuator is properly installed, pressing reset on the CoilKeeper will clear any previous supervisory signals and the CoilKeeper will indicate a normal state.

Actuator Improperly Installed



If the actuator is improperly installed, continuity or inductance tests will fail, resulting in a supervisory state. Ensure actuator is properly installed on the solenoid body following the manufacturer's instructions to clear supervisory state.

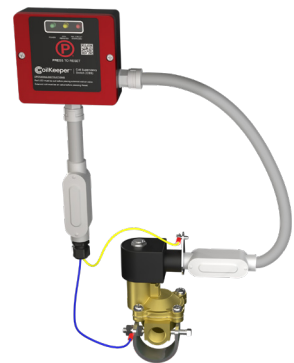
Actuator Missing



The CoilKeeper will also go into a supervisory state if the actuator is completely removed. The CoilKeeper latches and requires the actuator to be properly installed and CoilKeeper reset to clear the supervisory signal.

Remote Installation

In addition to direct installation onto the solenoid, the CoilKeeper can be remotely mounted wherever convenient. Wires attach to the included sense bracket and clamp to complete a circuit through the coil.



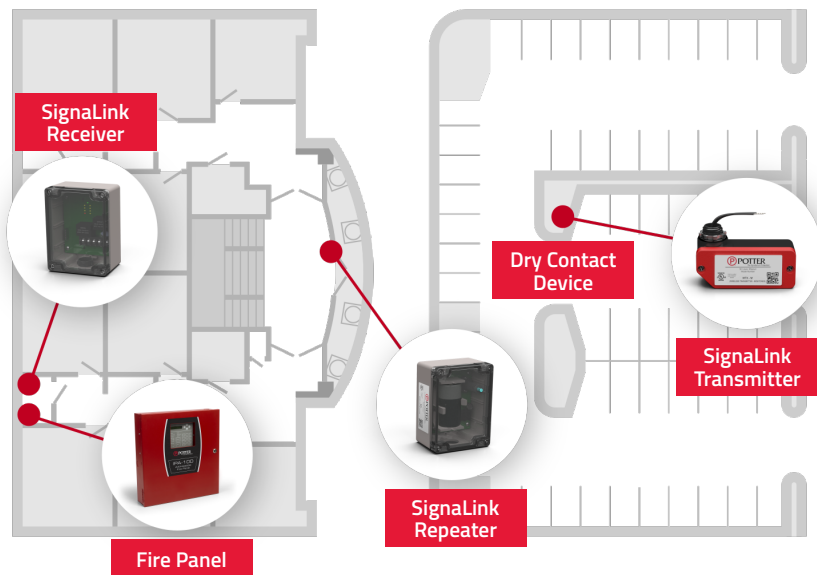


Supervisory Switches



SignalLink™ Bridge Wireless Supervisory System

- Compatible with any dry-contact switch
- Compatible with any fire alarm panel
- Eliminates trenching parking lots
- Ideal for temporary systems during construction
- Supervises wiring to connected devices
- 2.4 GHz band and repeaters for long range operation
- Setup Tool for assisting installation and troubleshooting



OSYSU-1 & 2 Outside Screw & Yoke Valve Supervisory Switch

- NEMA 6P (Submersible)
- Factory installed neoprene gasket
- OSYSU-1: One set of SPDT (Form C)
- OSYSU-2: Two sets of SPDT (Form C)
- Fits 1/2"-12" valves
- Adjustable stainless steel trip rod cuts installation time by 75%
- Mounting nuts with captive washers reduces installation time
- Installs on OS&Y valves in any position
- 5-year warranty
- Listings: UL, cUL CSFM, FM, and CE



Supervisory Switches



PCVS-2

Control Valve Supervisory Switch

- NEMA 6P (Submersible)
- Factory installed neoprene gasket
- PCVS-2: Two sets of SPDT (Form C)
- 1/2" male NPT fitting
- Fully adjustable stainless steel trip rod
- Installs on wall and post indicator valves, butterfly valves in any position
- 5-year warranty
- Listings: UL, cUL, CSFM, FM, and CE



OSYSU-2 CRH

Outside Screw & Yoke Valve Supervisory Switch with 316 Stainless Steel Hardware

- The OSYSU-CRH provides additional corrosion protection on top of the NEMA 4X enclosure with 316 stainless steel mounting hardware.



PCVS-2 CRH

Control Valve Supervisory Switch with 316 Stainless Steel Hardware

- The PCVS-CRH provides additional corrosion protection on top of the NEMA 4X enclosure with 316 stainless steel mounting hardware.



WLS

Tank Water Level

- NEMA 4 enclosure
- Detection range before 3" rise/ before 3" fall of water level
- Detection of 12" drop in water level
- Maximum pressure 175 psi
- Used on steel or wooden tanks
- Works on pressure or gravity tanks
- Listings: UL, and CSFM



Supervisory Switches



Valve shown for reference only.

RBVS

Retrofit Ball Valve Switch

- Monitors alarm line ball valves
- Perfect for backflow preventers 1" - 2"
- Mounts on standard & "T" style valves
- NEMA 4 rated enclosure for indoor and outdoor use
- Fits virtually any 1/2" - 2" ball valve
- Optional cover tamper switch
- US Patent 6,945,509
- Meets NFPA requirements 13, 2010, 18.17.1 and IBC/IFC 2009, 903.4
- Listings: UL, cUL, and FM Approved
- Can also be used to supervise coils on solenoids



PTS-C

Plug Type Supervisory Switch

- NEMA 6P submersible
- Factory installed neoprene gasket
- SPDT contacts 100mA at 28 VDC/AC, 250mA at 12 VDC/AC
- SPDT cover tamper 250mA at 28 VDC/AC
- Dimensions 7"L x 3.75"W x 3"D (including bracket)
- Temperature rating -40°F to 140°F
- 5-year warranty
- Listings: UL, cUL, FM, and CSFM
- For non-rising stem valves and other special applications



RTS-O/C

Room Temperature Switch

- Warns of potential sprinkler pipe freezing or other cold detection applications
- White ABS enclosure
- Epoxy sealed stainless steel case, bimetallic operating mechanism sensor
- Silver clad contacts
- RTS-O: Normally Open
- RTS-C: Normally Closed
- Temperature setting: 40°F ±5°F, 5°C ±3°C
- UL and cUL listed for fire sprinkler supervisory service



TTS

Tank Temperature Switch

- NEMA 4 enclosure
- Operates at 40°F and 140°F
- Available for steel or wood tanks
- Listings: UL, FM, and CSFM



Corrosion Testing



Bac-Pak

- Easy do-it-yourself test
- Tests for the three most common MIC causing bacteria
- Water in vial changes to color of lid, if bacteria present



Water Test Kit

- Complete MIC analysis through water sample
- Kit comes with prepaid return envelope for analysis
- Complies with NFPA 13, requiring MIC testing of water supply
- Detailed report of findings is issued within 2 weeks



5-Year Deposit/Sludge Test Kit

- Designed to conform to the requirements of NFPA 25 requiring testing for MIC if slime or tubercles are discovered during an internal inspection
- Kit comes with prepaid return envelope for analysis
- Detailed report of findings is issued within 2 weeks



Dry System Corrosion Solutions



IntelliGen™ Nitrogen Generators

- The only line of intelligent nitrogen generators for fire sprinkler systems
- Controller software monitors pressure, runtime, power, connectivity, and operational mode to ensure the unit is working at optimal performance
- Air fill and nitrogen purge automation
- Leak rate detection and trouble notification
- Web monitoring and email capabilities
- Ranging in size from small wall-mount units, to large modular units capable of supervising a total system capacity of 24,000 gallons



IntelliCheck™ Advanced Leak Rate Monitor

- Automated NFPA 13 and NFPA 25 leak rate testing
- IntelliView™ compatible for remote monitoring via internet
- Monitors existing systems or new systems
- Monitors any individual or common supervisory gas source
 - Nitrogen generators
 - Air compressors
 - Tank gas systems
- Assists in isolating system leaks



INS-PV IntelliPurge® Nitrogen Purge Valve

- Automatically purges corrosive oxygen from fire sprinkler systems
- Built in nitrogen analyzer for continuous monitoring of N2 levels in the sprinkler system.
- Local display allows visual indication of nitrogen level and purge time
- IntelliDry purge mode for ice plug and freezer application
- Used in conjunction with INS-RA remote annunciator for networking capability
- Includes UL listed and FM approved float type vent for fire protection service (175 PSI service pressure rating) that automatically closes when water reaches the vent in the event of a system activation



NAMD Nitrogen Air Maintenance Device

- Designed for use with nitrogen generators and air compressors
- Assembled in USA using corrosion resistant components
- No power required for operation
- Provided with a corrosion resistant mesh screen (50 or 60 mesh) to prevent the entry of particles into the regulator and sprinkler system
- Manual bypass to allow quick filling of sprinkler systems after operation or maintenance



Wet System Corrosion Solutions



PAAR-B

Potter Automatic Air Release (Patented)

- Helps eliminate air/water interface line where corrosion thrives
- Mechanical fail safe Water Shutoff Valve
- Electrically supervised Water Shutoff Valve
- Visual indication of Water Shutoff Valve operation
- Prevents damage from water spray, drips, or leaks from air vent
- Complete unit ready to install at high points in sprinkler systems
- UL listed and FM approved air vent for use on fire sprinkler branch lines
- Meets NFPA 13 Code requirement for air venting



PAV

Potter Air Vent

- Provides automatic venting of trapped air in fire sprinkler systems
- Limits oxygen corrosion when placed at the high point(s) of the systems
- UL listed and FM approved air vent for use on fire sprinkler branch lines
- Meet NFPA 13 Code requirement for air venting



AquaN2 Kit

Potter Air Vent

- Quickly removes oxygen from wet pipe systems, significantly reducing corrosion
- Ensures that all trapped gas pockets are 98%+ Nitrogen Gas
- Easy installation and maintenance
- Designed for fast Nitrogen fill, eliminating any necessary downtime of fire sprinkler system
- Includes both the Nitrogen Injection Manifold (NIM and Quick X-haust Manifold (QXM)



Corrosion Monitoring



PCMPK

Probe Assembly with PS10-1

- Used in conjunction with any corrosion monitoring station or as a stand alone corrosion monitoring probe
- Pressure switch trips when corrosion affects probe
- Provides notification when coupons need replacement
- Patent pending
- Probe simulates 5 years of allowable pipe loss in schedule 10 pipe (FM Data Sheet 2-1)



PCMS-RM

Potter Corrosion Monitoring Station Riser Mount

- For wet or dry systems
- Installs on riser for easy access
- 3 outlets for coupons and probe
- Sight glass to view internal conditions
- Air inlet valve
- Includes one steel and one brass coupon
- Shown with optional PCMPK installed
- Patent pending
- Ships assembled
- 250 PSI rated
- Allows for inspections and samples without disabling sprinkler system



Explosion Proof Devices



PIVS-U-EX

Explosion Proof Post Indicator Valve Switch

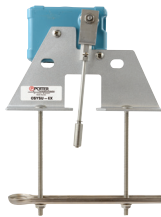
- Installs on post indicator valves and butterfly valves
- ½" mounting nipple
- Contact rating: 15 AMPS at 125 VAC, 1/2 AMP at 125 VDC
- -40° to 140°F
- UL listed enclosure NEMA 1, 7, 9



PIVSU-EX-O

Outdoor Explosion Proof Post Indicator Valve Switch

- Installs on post indicator valves and butterfly valves
- ½" mounting nipple
- Contact rating: 15 AMPS at 125 VAC, 1/2 AMP at 125 VDC
- -13°F to 185°F
- UL listed enclosure NEMA 1, 3, 4, 4X, 6, 6P, & 13 IP66 and 67



OSYS-U-EX

Explosion Proof OS & Y Switch - Universal

- Installs on OS & Y valves ½"-2"
- Contact rating: 15 Amps at 125 VAC, 1/2 Amp at 125 VDC
- -40° to 140°F
- UL listed enclosure NEMA 1, 7, 9



OSYSU-EX-O

Outdoor Explosion Proof OS & Y Switch

- Installs on OS & Y valves ½"-2"
- Contact rating: 15 Amps at 125 VAC, 1/2 Amp at 125 VDC
- -13°F to 140°F
- UL listed enclosure NEMA 1, 3, 4, 4X, 6, 6P, and 13 IP66 and 67
- Water tight, dust tight, and corrosion resistant for outdoor use



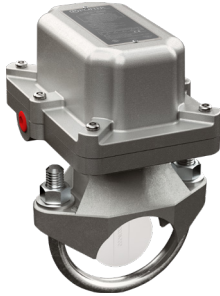
PS10-EX and PS40-EX

Explosion Proof Pressure Switches

- NEMA 4 and 9 solid metal enclosure
- 300 psi system rated pressure
- ½" NPT male brass fitting
- PS10-EX set for operation at:
 - Two switches operate on pressure increase at 6 psi
 - Two switches operate on pressure decrease at 5 psi
- PS40-EX set for operation at:
 - One switch operates on pressure decrease at 30 psi
 - Second switch operates on pressure increase at 50 psi
- 1-year warranty
- Listings: UL, cUL, CSFM, FM, IECEx, and ATEX



Explosion Proof Devices



VSR-FEX

Explosion Proof Vane Type Waterflow Switch

- NEMA 4 and 9 solid metal enclosure
- 0-90 second pneumatic retard
- 450 psi system pressure rated
- Non-corrosive saddle bushing
- Two ½" threaded connections for conduit
- Pipe schedules 10-40 sizes 2"-8"
- 1-year warranty
- Listings: UL, cUL, CSFM, ATEX, and FM



FSEX-24 PMR

Explosion Proof Strobe

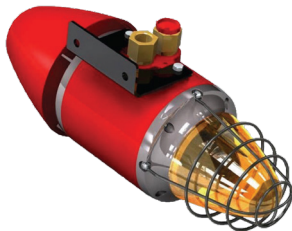
- 24 VDC
- Corrosion resistant housing
- Indoor or outdoor mounting
- Polarized
- Listings: UL and CSFM



FHEX-24 SMR

Explosion Proof Horn

- 24 VDC
- Heavy duty, copper free cast aluminum housing
- NEMA 4X, IP66 enclosure
- Listings: UL and cUL



YL6

Explosion Proof Horn/Strobe

- 24 VDC
- Low current draw
- Aluminum enclosure
- Flash rate of one per second
- 110 dB at one meter sounder
- Listings: UL and cUL



RMS-6T-EXP-WP

Explosion Proof Pull Station

- Marine & NEMA 4X rated
- Weather proof
- ADA compliant
- Allen Key reset
- DPDT switch
- Screw terminal connections
- Listings: UL, FM, and CSFM



Releasing Panels



PFC-4410RC

Water or Agent Extinguishing Panel

- 4 Class B programmable initiating zones and outputs
- Compatible with up to 10,000' of Linear Heat Detection per zone
- 2 dedicated Class B supervisory zones
- 32 character LCD display, 34 LED display
- 20 pre-configured programs
- On-board programming
- 40 event history buffer
- Single or double interlock
- Single or dual hazard
- Alarm, trouble, supervisory, and waterflow relays standard
- 1 abort circuit
- Listings: UL, ULC, FM, CSFM, and NYC Fire Department Certificate of Approval



PFC-6075R

Addressable Releasing Panel

- Built in SLC capable of supporting 75 devices
- 5.0 Amp 24vdc Power Supply
- 2 NACs each rated at 3.0 Amps max
- 2 I/O Circuits each rated at 1.0 Amps max
- Listed for manual release abort or release circuit
- Support for all major synchronization patterns
- Built-in Ethernet port for programming and network connectivity
- Built-in email support for system status and event information
- P-Link RS-485 bus supports system accessories
- 1,000 event non-volatile history buffer
- Listed with pre-action, deluge, and agent systems
- UL listed, CSFM, NYC Fire Department Certificate of Approval



RA-6075R

LCD Annunciator

- Used with PFC-6075R
- 32 character LCD display
- Compact metal box with key lock
- Identical keypad to PFC-6075R
- Release and Pre-Release LED's to indicate releasing status



MAS

Manual Pull/Abort Station Combination

- Perfect for agent suppression systems
- UL, cUL Listed, FM Approved
- No disassembly required
- Plate mounts to box with just 2 screws
- Backbox included
- Optional flush mount plate
- Standard with Red or Yellow agent release pull stations
- Available without pull station installed for use with RMS series stations



Releasing Panels



Abort Switch

- One N.O. momentary contact
- 5 Amps @ 24 VDC (10 mA minimum)
- Indoor use only
- Listings: UL and cUL
- Available with blue button for Canada



MRS

Main/Reserve Switch

- For agent suppression systems when uninterrupted protection is required
- Complies with NFPA 12, 12A, 17, and 2001
- Provides visual indication of connection to Main or Reserve
- Key protected with key removable in either position



RCDS-1

Releasing Circuit Disable Switch

- One N.O. key operated switch
- 4 Amps @ 120/240 VAC 2.5 Amps @ 125 VAC
- 24 VDC 50 mA
- Indoor use only
- Creates supervisory condition on associated release panel
- Replaces software controlled disconnect
- Temperature range -22°F to 140°F (-30°C to 60°C)
- Complies with NFPA 72 requirements
- Listings: UL and cUL



RA-4410RC

Remote Annunciator

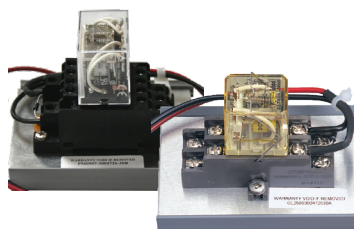
- Up to 4 annunciators can be connected to each PFC-4410RC
- Rotary switches on panel and annunciator to supervise
- Trouble/Supervisory buzzer
- Separate LED's for various alarms
- Lamp test/buzzer silence switch
- Listings: UL, cUL, CSFM, FM, and MEA



ARM-44

Relay Module

- Provides 8 Form C relay outputs
- Selectable latching or common setting
- Multiple operating modes
- Listings: UL, cUL, CSFM, and FM with the PFC-4410RC



ARM

Auxiliary Relay Module

- 40mA at 24 VDC
- 10 amps resistive
- 120/240 VAC, 0-30 VDC
- 4 DPDT contacts (ARM-1)
- DPDT contacts (ARM-2)
- Listings: UL (PFC-4410RC)



Notification Appliances



Multitone Mini Horn 12-24 VDC

MHT Series

- Terminal/4-wire models
- Sound output 97dB
- Single gang plate
- 12-24 VDC
- Listings: UL and ULC



Multitone Mini Horn 120 VAC

MT Series

- Piezo Sounder for Fire Alarm Indoor applications
- Low current and High Sound Output
- Wide range operating temperature 32°F to 120°F (0°C to 50°C)
- Ideal for Residential or Commercial application
- 6 3/4" wire leads for Easy field wiring
- Jumper selectable temporal 3 or continuous tone
- Multitone feature allows selection of Temporal 3 evacuation tone as required by NFPA 72 or steady tone



Electronic Horn

EH 24 Series

- Red or white
- Chime, whoop, mechanical, or 2400HZ sound output
- Indoor/outdoor listed (with weatherproof back box)
- Pre-wire back plate
- Universal back plate mounting
- Listings: UL and CSFM
- Surface back box available



Selectable Candela Strobe & Strobe/ Horn

S-24 & HS-24

- 24 VDC with 15, 30, 60, 75, or 110 cd settings
- 5 candela settings per device
- Sound output settings including chime
- Candela selection view window
- Pre-wire back plate
- Low current draw
- Listings: UL, ADA and CSFM



Notification Appliances



Mini Horn

HP-25 Series

- Terminal/4-wire models
- Sound output 97dB
- Single gang plate
- 12-24 VDC
- 15 mA current draw
- Temporal and non-temporal patterns
- Listings: UL and ULC



Ceiling Strobe & Strobe/Horn

CS & CHS

- Selectable 15, 30, 75, 95, 115, or 150 candela
- Low current draw
- 24 VDC input
- Pre-wire back plate
- High/low dB
- Designed for wall and ceiling mount
- Surface mount CLNG-BB
- Listings: UL, CSFM, ADA



Outdoor Strobe & Strobe/Horn

SLP & HSLP

- 12 VDC with 15, 35, or 60 cd setting
- 24 VDC with 15, 35, 60, 75, 95, or 110 cd setting
- 6 candela settings per device with selection view window
- 33 sound output settings
- 15/75 ADA compliant on 60 cd setting
- Pre-wire back plate with universal back plate mounting
- Listings: UL and cUL



Notification Appliances



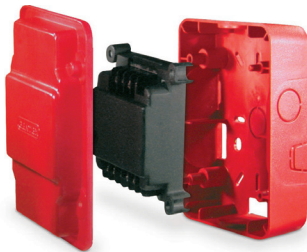
Weatherproof Select-A-Strobe/Horn® SH-120 Series

- 120 VAC operation
- Low current draw
- 6 sound output settings
- Indoor and outdoor use
- Includes BBX-5 backbox
- Listings: UL and CSFM



SASH Series Select-A-Strobe/Horn®/Sign

- SASH-12/24 VDC
- SASH-120, 115 VAC
- 90dBA at 10 ft.
- Indoor and outdoor use
- Weatherproof backbox included with both models
- UL Listed Strobe/Horn



Sync Module AVSM

- Operates with S-24, HS-24, CS, and CHS series
- Synchronize horn and strobe with the use of only two wires
- Unlimited number of modules that can be synchronized
- Rated for 3 amps continuous current and 5 amps surge
- Synchronizes to 1Hz flash rate



Bells PBA-AC & MBA-DC

- Red powder coating finish
- Sizes available: 6", 8", 10"
- Available voltage: 24 VAC, 120 VAC, 12 VDC, 24 VDC
- Service Use: fire alarm, general signal, burglar alarm
- Environment: -40° to 150°F, indoor or outdoor use (outdoor use requires weatherproof backbox BBK-1)
- 5-year warranty
- Listings: UL, ULC (MBA bells only), and CSFM



Digital Communicators



PFC-6006

Sprinkler Monitoring Panel

- Built-in IP and Dual line DACT communications
- 6 programmable initiating device circuits (1 class A and 5 class B)
- 2 wire smoke detector capability
- 0.5 amp NAC circuit, 0.5 amp Aux Power circuit
- Email capabilities for events and reminders
- Quadrasync support
- Listings: UL, cUL, CSFM, and NYC Fire Department Certificate of Approval



RA-6006 (Canada Only)

LCD Annunciator

- 32 character LCD display
- Communicates using RS-485 connection
- Used on the PFC-6006 Sprinkler Monitoring Panel
- Up to 4 can be connected using Class B wiring



RA-6075

LCD Annunciator

- 32 character LCD display
- Communicates using RS-485 connection
- Used on any PFC-6000 Panel
- Connect up to 31 to each P-Link Circuit



Conventional Detectors



CPS-24

Photoelectric Smoke Detector

- Low profile 2"
- 2 or 4 wire base
- Sounder & relay base available
- 2 built-in power alarm LEDs
- With or without magnetic test (MRI Rooms)*
- Vandal resistant locking feature
- Automatic sensitivity verification feature complies with NFPA 72, Chapter 2 & 7, Inspection, Testing and Maintenance requirements.
- Base not included
- Listings: UL, ULC, CSFM and FM

*Model without magnetic test feature is CPS-24N



BPS Series

Baseless Smoke Residential

- 12 or 24 VDC
- BPS-2, 2 wire baseless photo electric smoke
- BPS-4, 4 wire baseless photo electric smoke
- White or eggshell color
- With heat available
- Base not included
- Listings: UL, ULC, CSFM and FM



Heat Detector

CR-135W, CF-135W, CR-200W, CF-200W

- Available in 135°F and 200°F fixed temperature or with rate of rise
- Rate of rise responds to rise in temperature of approximately 15°F/min
- Other models available upon request
- Listings: UL, ULC, CSFM and FM



Duct Detector

DSD Series

- Photoelectric DSD-P
- Powered by 115 VAC, 24 VAC or 24 VDC
- (2) 10A Form C alarm contacts
- Wide variety of remote accessories
- WP-1 enclosure provides outdoor installations against rain, sleet, and snow
- Comes with sampling tubes
- Listings: UL and CSFM



Sampling Tubes

- STS-2.5 duct sampling tube
- STS-5.0 duct sampling tube
- STS-10 duct sampling tube



Pull Stations



Fire Pull Station

P32-1T Series*

- Single or dual contact
- Terminal connections
- Allen Key reset
- Standard single gang mounting
- 10 Amp snap action switch
- Optional auxiliary relay contacts
- High gloss red enamel finish
- Glass breakrod
- Surface back boxes available
- Listings: UL, ULC, ADA, CSFM and FM

*Canadian Model: P32-1TS



Dual Action

P32-1T-LP

- Single contact
- Allen Key reset
- Standard single gang mounting
- 10 Amp snap action switch
- Optional auxiliary relay contacts
- High gloss red enamel finish
- Glass breakrod
- Surface and weatherproof back boxes available
- Listings: UL, ULC, ADA, CSFM and FM



Special Application

Pull Stations

- Colors available: Black, blue, green, grey, orange, purple, red, white or yellow
- Single or dual action, single or double contact
- Terminal connectors
- Glass breakrod
- 10 Amp snap action switch
- Brass or chrome plating
- Custom labeling in any language
- Weatherproof and explosion proof models available
- Made in the U.S.A.
- Listings: UL, ULC, ADA, CSFM, and FM



Weatherproof

RMS-1T-WP

- Single or dual action
- Optional key reset
- Weatherproof back box included
- 10 Amp snap action switch
- Optional auxiliary relay contacts
- High gloss red enamel finish
- Glass breakrod
- Single or double contact
- Listings: UL, ULC, ADA, CSFM and FM



Product List

Flow Switches

Stock #	Model #	Description
1144402	VSR-2	Waterflow alarm switch for 2" pipe
1144425	VSR-2½	Waterflow alarm switch for 2 ½" pipe
1144403	VSR-3	Waterflow alarm switch for 3" pipe
1144435	VSR-3½	Waterflow alarm switch for 3 ½" pipe
1144404	VSR-4	Waterflow alarm switch for 4" pipe
1144405	VSR-5	Waterflow alarm switch for 5" pipe
1144406	VSR-6	Waterflow alarm switch for 6" pipe
1144408	VSR-8	Waterflow alarm switch for 8" pipe
1144410	VSR-10	Waterflow alarm switch for 10" pipe
1116102	VSR-AT-2	Waterflow alarm switch (w/ auto-test) for 2" pipe
1116125	VSR-AT-2½	Waterflow alarm switch (w/ auto-test) for 2 ½" pipe
1116103	VSR-AT-3	Waterflow alarm switch (w/ auto-test) for 3" pipe
1116135	VSR-AT-3½	Waterflow alarm switch (w/ auto-test) for 3 ½" pipe
1116104	VSR-AT-4	Waterflow alarm switch (w/ auto-test) for 4" pipe
1116105	VSR-AT-5	Waterflow alarm switch (w/ auto-test) for 5" pipe
1116106	VSR-AT-6	Waterflow alarm switch (w/ auto-test) for 6" pipe
1116108	VSR-AT-8	Waterflow alarm switch (w/ auto-test) for 8" pipe
1144440	VSR-S	Waterflow alarm switch for 1" thru 2" pipe
1144460	VSR-SG	Waterflow alarm switch with union for 1" thru 2" pipe
1144465	VSR-ST	Waterflow alarm switch with threaded union for 1" thru 2" pipe
1144450	VSR-C-2	Waterflow alarm switch for 2" copper pipe
1144451	VSR-C-2½	Waterflow alarm switch for 2 ½" copper pipe
1144452	VSR-C-3	Waterflow alarm switch for 3" copper pipe
1144453	VSR-C-4	Waterflow alarm switch for 4" copper pipe
1029030		Replacement retard for waterflow alarm switch
1116002	VSR-FE2-2	Waterflow alarm switch with electronic retard 2" pipe
1116025	VSR-FE2-2½	Waterflow alarm switch with electronic retard 2½" pipe
1116003	VSR-FE2-3	Waterflow alarm switch with electronic retard 3" pipe
1116035	VSR-FE2-3½	Waterflow alarm switch with electronic retard 3½" pipe
1116004	VSR-FE2-4	Waterflow alarm switch with electronic retard 4" pipe
1116005	VSR-FE2-5	Waterflow alarm switch with electronic retard 5" pipe
1116006	VSR-FE2-6	Waterflow alarm switch with electronic retard 6" pipe
1116008	VSR-FE2-8	Waterflow alarm switch with electronic retard 8" pipe
1111100	VS-SP	Special application waterflow switch without retard
1116051	VSG-2½	Waterflow alarm switch for low flow 2 ½" (73 mm) pipe
1116052	VSG-2½	Waterflow alarm switch for low flow 2 ½" (76.1 mm) pipe
1010080	WFSR-F	Pressure activated waterflow alarm switch with retard
1119067	RD13-1	Residential riser without check valve for 1" pipe
1119077	RD13-1.25	Residential riser without check valve for 1 ¼" pipe
1119087	RD13-1.50	Residential riser without check valve for 1 ½" pipe
1119097	RD13-2	Residential riser without check valve for 2" pipe

Pressure Switches & Peripherals

Stock #	Model #	Description
1340103	PS10-1	Pressure type waterflow alarm and supervisory switch one contact. Pressure Increase at 6 psi.
1340104	PS10-2	Pressure type waterflow alarm and supervisory switch two contacts. Pressure Increase at 6 psi.
1340415	PS15-2	High/low pressure switch two contacts. Pressure decrease at 10 psi, pressure increase at 20 psi.
1340425	PS25-2	High/low pressure switch two contacts. Pressure decrease at 18 psi, pressure increase at 28 psi.
1340403	PS40-1	High/low pressure switch one contact. Pressure Decrease at 30 psi.
1340404	PS40-2	High/low pressure switch two contacts. Pressure Increase at 50 psi, pressure Decrease at 30 psi
1341005	PS100-2	Pressure type waterflow alarm and supervisory switch two contacts. Pressure decrease at 90 psi.
1341203	PS120-1	High/low pressure switch one contact. Pressure Decrease at 110 psi.
1341204	PS120-2	High/low pressure switch two contacts. Pressure Increase at 130 psi, pressure Decrease at 110 psi.
1000018	BVL	Lever type bleeder valve
1370080	PCS	Pump control switch
1370010	ADPS-300-1B	Adjustable deadband pressure switch w/ brass connection
1370000	ADPS-300-1B-O	Adjustable deadband pressure switch w/ brass connection open frame

Tamper & Supervisory Switches

Stock #	Model #	Description
1010201	PTS-C	Plug type supervisory switch
1010117	WLS	Tank water level switch
1010108	RTS-O	Room temperature switch normally open
1010109	RTS-C	Room temperature switch normally closed
1010040	TTS-S	Tank temperature switch for steel tank
1010041	TTS-W	Tank temperature switch for wood tank
1010102	OSYSU-1	Outside screw & yoke valve supervisory switch one contact
1010202	OSYSU-2	Outside screw & yoke valve supervisory switch two contacts
1010210	OSYSU-2 CRH	Outside screw & yoke valve supervisory switch two contacts with Corrosion Resistant Hardware
1010203	PCVS-2	Control valve supervisory switch two contacts
1010211	PCVS-2 CRH	Control valve supervisory switch two contacts with Corrosion Resistant Hardware
1000065	RBVS	Retrofit ball valve switch
1010500	CoilKeeper	Coil Supervisory Switch
3008040	Signalink Bridge	Wireless Supervisory System



Product List

Corrosion Solutions

Stock #	Model #	Description
1119172	BAC-PAK	Do-it-yourself test kit for most common water bacteria
1119178	WTK	Water test kit
1119174	Sludge Kit	5 year deposit sludge test kit
1119546	PCMS-RM	Corrosion monitoring station riser mount
0090180	PCMPK-1	Corrosion monitoring probe kit riser mount & dry pipe models
1030001	PAAR-B	Automatic air release
1119720	PAV	Air vent
Varies	INS Series	Nitrogen Generators - Call for ordering information
1119664	IntelliCheck	Advanced Leak Rate Monitor

Explosion Proof Devices

Stock #	Model #	Description
1010122	PIVSU-EX	Explosion proof post indicator valve switch
1010120	OSYSU-EX	Explosion proof OS & Y switch
1010121	OSYSU-EX-O	Outdoor Explosion proof OS & Y switch
1350102	PS10-EX	Explosion proof pressure switch 4-20 PSI
1350402	PS40-EX	Explosion proof pressure switch 10-175 PSI
1113202	VSRF-EX-2	Explosion proof vane type waterflow switch 2"
1113225	VSRF-EX-2 ½	Explosion proof vane type waterflow switch 2 ½"
1113203	VSRF-EX-3	Explosion proof vane type waterflow switch 3"
1113235	VSRF-EX-3 ½	Explosion proof vane type waterflow switch 3 ½"
1113204	VSRF-EX-4	Explosion proof vane type waterflow switch 4"
1113205	VSRF-EX-5	Explosion proof vane type waterflow switch 5"
1113206	VSRF-EX-6	Explosion proof vane type waterflow switch 6"
1113208	VSRF-EX-8	Explosion proof vane type waterflow switch 8"
1430501	FSEX-24PMR	Explosion proof strobe
1430500	FHEX-24SMR	Explosion proof horn
1430510	YL6	Explosion proof horn/strobe
1000400	RMS-6T-EXP-WP	Explosion & weather proof pull station

Releasing Panel

Stock #	Model #	Description
3006142	PFC-4410RC	Water or agent extinguishing panel
3006461	PFC-6075R	75 Point Addressable Releasing Panel
3006462	RA-6075R	LCD Remote Releasing Annunciator
3001000	Abort Switch	Abort Switch
3001002	RCDS-1	Releasing Circuit Disable Switch
3004726	ARM-1	Auxiliary Relay Module
3006221	ARM-44	8 From C Relay Board f/PFC-4410RC
3006400	RA-4410RC	Remote Annunciator
5130080	BT6-4	Battery 6V, 4AH
5130092	BT-40	Battery 12V, 4AH
5130084	BT-80	Battery 12V, 8AH
5130090	BT-120	Battery 12V, 12AH
5130086	BT-180	Battery 12V, 18AH
5130097	BT-260	Battery 12V, 26AH

Notification Appliances

Stock #	Model #	Description
4890001	MHT-1224R	Multitone mini horn 12/24V red
4890002	MHT-1224W	Multitone mini horn 12/24V white
4890003	MHT-1224PR	Multitone mini horn 12/24V plain red
4890004	MHT-1224PW	Multitone mini horn 12/24V plain white
1610226	MTR-120MH	Multitone mini horn 120V red
1610227	MTW-120MH	Multitone mini horn 120V white
4550014	HP-25TR	Mini horn terminal 12/24V red
4890005	EH-24R	Horn Red
4890006	EH-24W	Horn White
4890007	EH-24PR	Horn Plain Red



Product List

4890008	EH-24PW	Horn Plain White
4890010	S-24WR	Wall selectable strobe Red
4890011	S-24WW	Wall selectable strobe White
4890012	S-24PWR	Wall selectable strobe Plain Red
4890013	S-24PWW	Wall selectable strobe Plain White
4890030	HS-24WR	Wall selectable Horn/Strobe Red
4890031	HS-24WW	Wall selectable Horn/Strobe White
4890032	HS-24PWR	Wall selectable Horn/Strobe Plain Red
4890033	HS-24PWW	Wall selectable Horn/Strobe Plain White
4890020	CS-24R	Ceiling selectable strobe Red
4890021	CS-24W	Ceiling selectable strobe White
4890022	CS-24PR	Ceiling selectable strobe Plain Red
4890023	CS-24PW	Ceiling selectable strobe Plain White
4890040	CHS-24R	Ceiling selectable Horn/Strobe Red
4890041	CHS-24W	Ceiling selectable Horn/Strobe White
4890042	CHS-24PR	Ceiling selectable Horn/Strobe Plain Red
4890043	CHS-24PW	Ceiling selectable Horn/Strobe Plain White
4890054	SLP-24WR-WP	Strobe Red low profile weather proof
4890055	SLP-24WW-WP	Strobe White low profile weather proof
4890056	SLP-24PWR-WP	Strobe Plain Red low profile weather proof
4890057	SLP-24PWW-WP	Strobe Plain White low profile weather proof
4890064	HSLP-24WR-WP	Horn/Strobe Red low profile weather proof
4890065	HSLP-24WW-WP	Horn/Strobe White low profile weather proof
4890066	HSLP-24PWR-WP	Horn/Strobe Plain Red low profile weather proof
4890067	HSLP-24PWW-WP	Horn/Strobe Plain White low profile weather proof
1000760	SASH-120	Select-A-Strobe/Horn®/Sign 120V
1750070	MBA-126	Bell 6" 12VDC red
1750080	MBA-128	Bell 8" 12VDC red
1750060	MBA-1210	Bell 10" 12VDC red
1750100	MBA-246	Bell 6" 24VDC red
1750110	MBA-248	Bell 8" 24VDC red
1806024	PBA-246	Bell 6" 24VAC red
1808024	PBA-248	Bell 8" 24VAC red
1810024	PBA-2410	Bell 10" 24VAC red
1806120	PBA-1206	Bell 6" 120VAC red
1808120	PBA-1208	Bell 8" 120VAC red
1810120	PBA-12010	Bell 10" 120VAC red
4890250	AVSM-R	Sync module Red
4890251	AVSM-W	Sync module White

Digital Communicators

Stock #	Model #	Description
3003011	PFC-6006	Sprinkler monitoring panel
3006448	RA-6006	Remote Annunciator for PFC-6006 (Canada)
3006458	RA-6075	LCD annunciator

Conventional Smoke & Heat Detectors

Stock #	Model #	Description
1430036	CPS-24	Photoelectric smoke detector
1430006	BPS-2	Baseless smoke detector residential 2 wire eggshell
1430026	BPS-2W	Baseless smoke detector residential 2 wire white
1430007	BPS-4	Baseless smoke detector residential 4 wire eggshell
1430029	BPS-4W	Baseless smoke detector residential 4 wire white
1000140	CR-135W	Heat detector 135° rate-of-rise
1000142	CF-135W	Heat detector 135° fixed temperature
1000141	CR-200W	Heat detector 200° fixed temperature/rate-of-rise
1000143	CF-200W	Heat detector 200° fixed temperature
1430009	DSD-P	Photoelectric duct detector
1000266	STS-2.5	Duct sampling tube 2 ½ ft.
1000468	STS-5.0	Duct sampling tube 5 ft.
1000263	STS-10	Duct sampling tube 10 ft.

Pull Stations

Stock #	Model #	Description
1000447	P32-1T	Pull station single action
1000476	P32-1T-LP	Pull station dual action
1000401	RMS-1T-WP	Pull station weather proof

Residential waterflow switch applications:



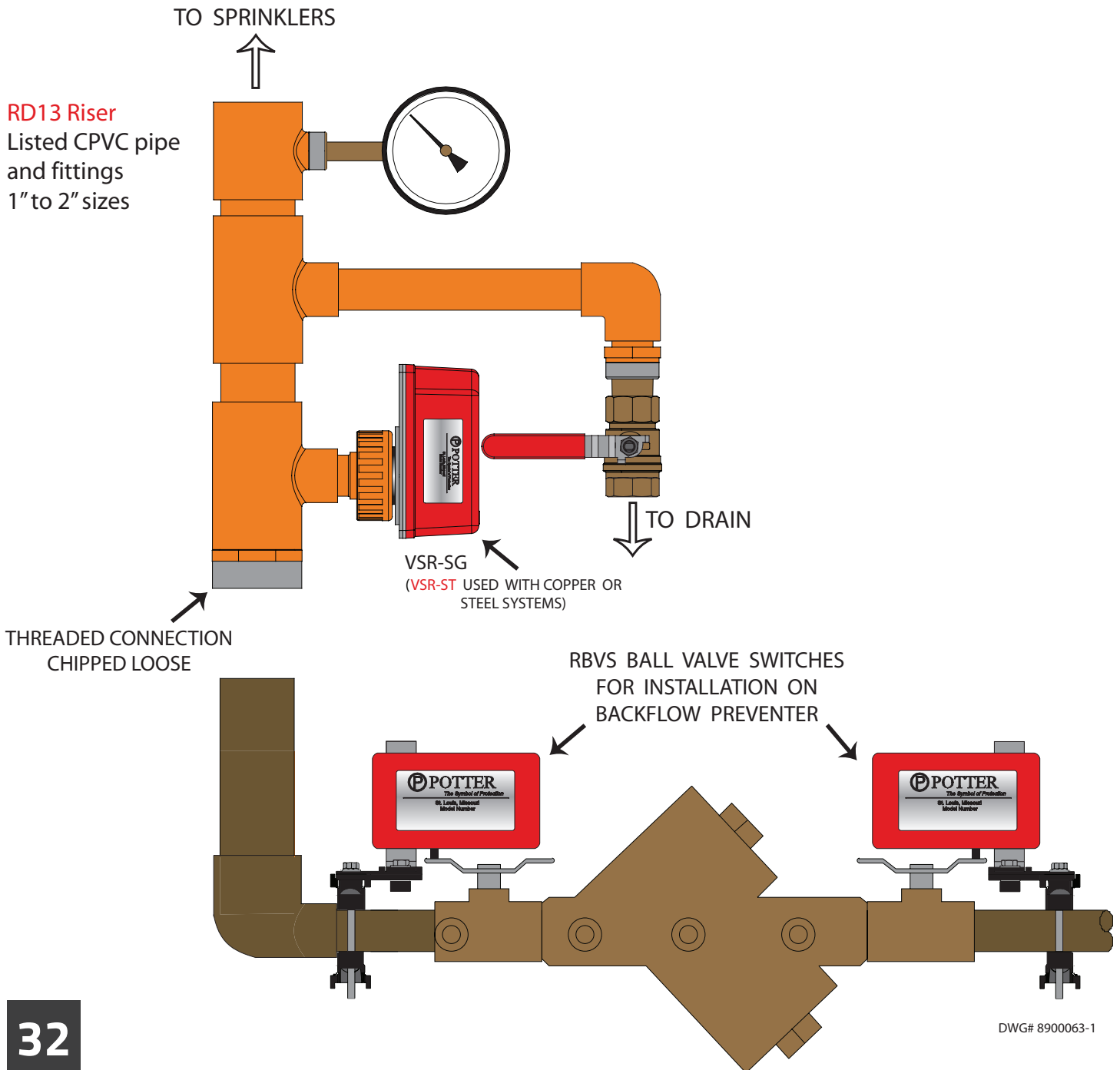
SASH-24/120V



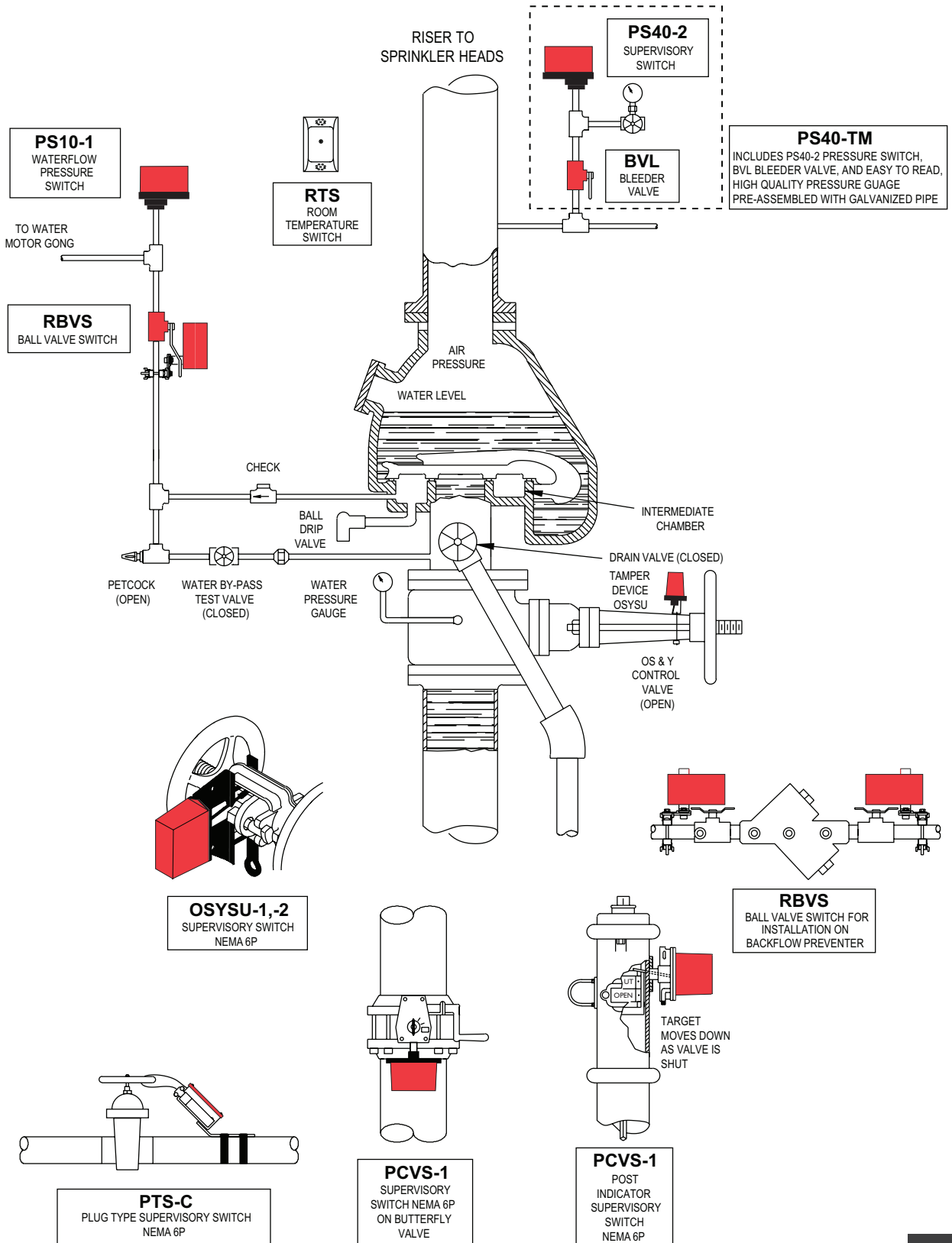
PBA-AC SERIES
MBA-DC SERIES



SH-1224
SERIES

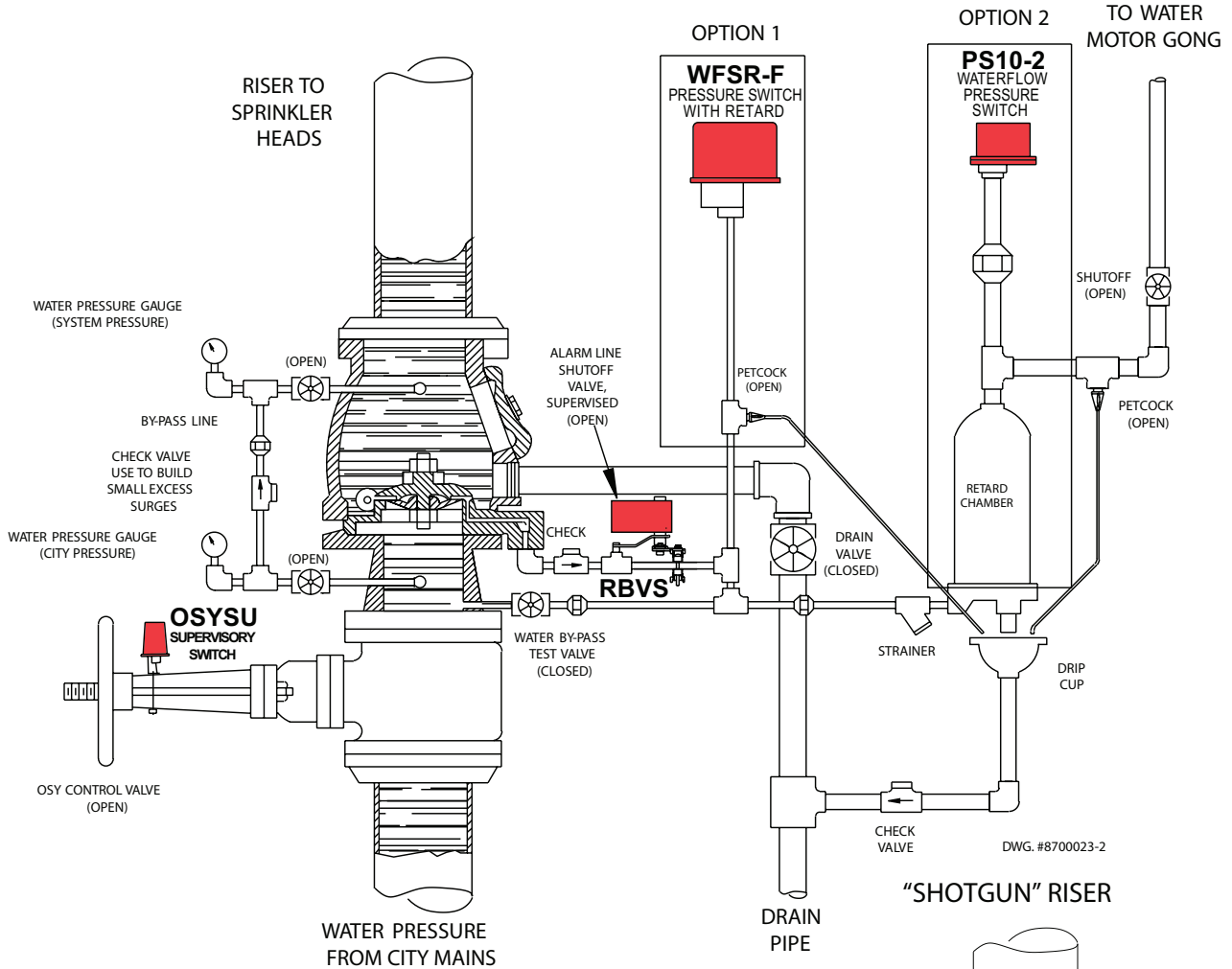


Dry pipe valve system waterflow alarm installation:

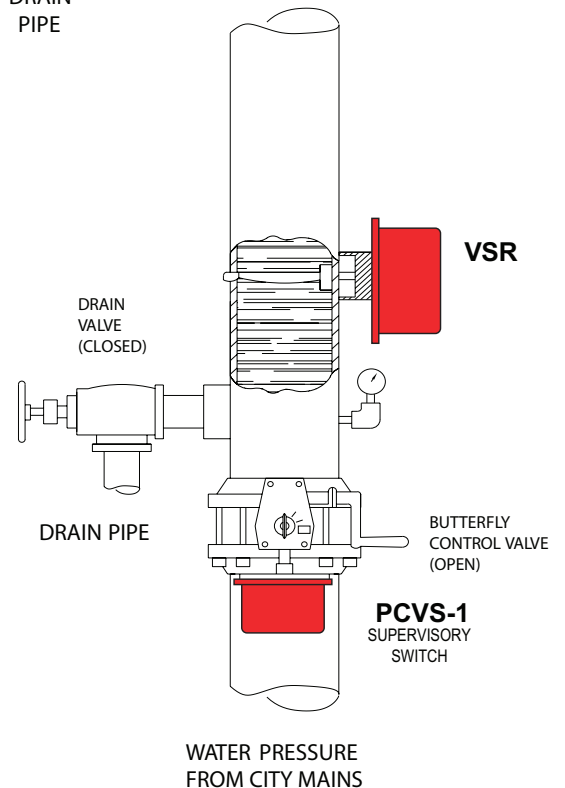
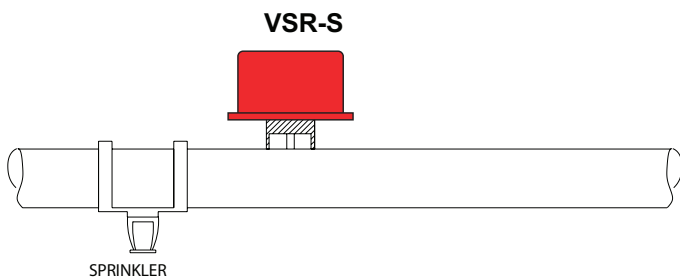


Wet pipe sprinkler systems:

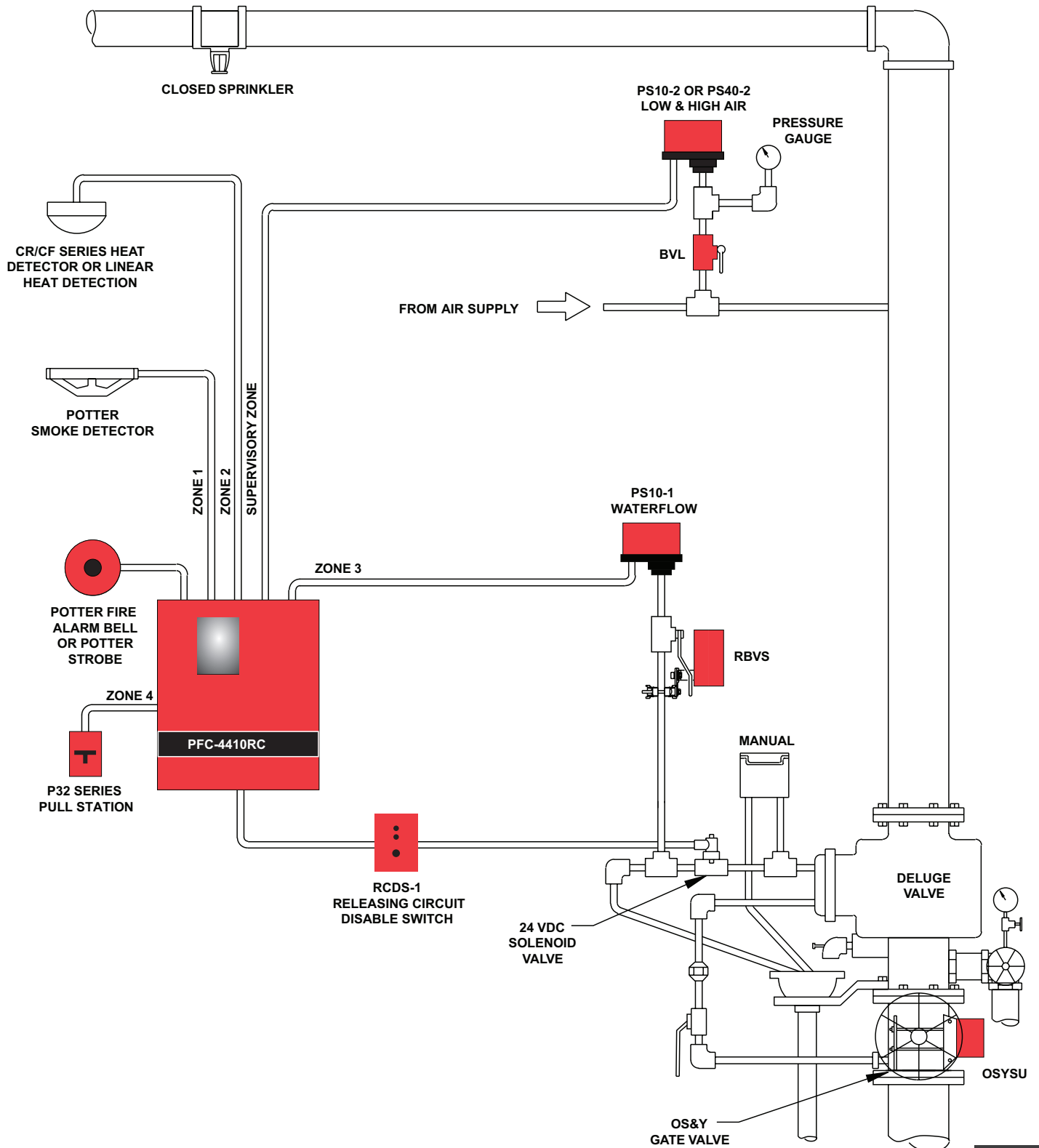
ALARM CHECKVALVE



BRANCH LINE



**Pre-action deluge system
Single zone/electric cross zone:**





At Potter Electric Signal Company, LLC,

QUALITY is the first order of business. Since 1898, we have served the Fire Sprinkler industry on a world-wide basis. Today, we manufacture a full line of Sprinkler Monitoring Devices and Corrosion Solutions with unmatched quality and dependability.

We strive to provide you with the finest products and technical support in the industry. You will also receive prompt service from a dedicated team of professionals. After all, you, the customer, are the most important member of that team.

So give us a call.



Potter Electric Signal Company, LLC

1609 Park 370 Place

St. Louis, MO 63042

P: 866-572-3005

F: 314-595-6999

www.pottersignal.com/sprinkler